

STATISTICAL REPORTS

Note:

All statistics on the following pages were provided by the Statistical Division of the Administrative Office of the United States Courts. Some statistics from prior years have been revised to reflect updated information gathered by the Administrative Office.

STATISTICS

COURT OF APPEALS

Table 1
SECOND CIRCUIT COURT OF APPEALS
Years ending September 30th.

	2006	2007	Change
Private Civil			
Filed	1471	1415	-3.8%
Terminated	625	643	2.9%
Pending	1467	1576	7.4%
U.S. Civil *			
Filed	238	241	1.3%
Terminated	125	113	-9.6%
Pending	245	266	8.6%
Bankruptcy			
Filed	103	100	-2.9%
Terminated	66	33	-50.0%
Pending	93	128	37.6%
Administrative Agency			
Filed	2752	2271	-17.5%
Terminated	2746	1869	-31.9%
Pending	3116	1914	-38.6%
Original Proceedings			
Filed	333	245	-26.4%
Terminated	86	54	-37.2%
Pending	153	136	-11.1%
Prisoner Petitions			
Filed	1030	1069	3.8%
Terminated	829	855	3.1%
Pending	917	945	3.1%
Criminal			
Filed	1102	993	-9.9%
Terminated	280	373	33.2%
Pending	1350	1482	9.8%
Total			
Filed	7029	6334	-9.9%
Terminated	4757	3940	-17.2%
Pending	7341	6447	-12.2%

* Appeals in which the United States is a party.

Figure 1
Second Circuit Caseload Summary
Periods Ended September 30, 1997 Through 2007

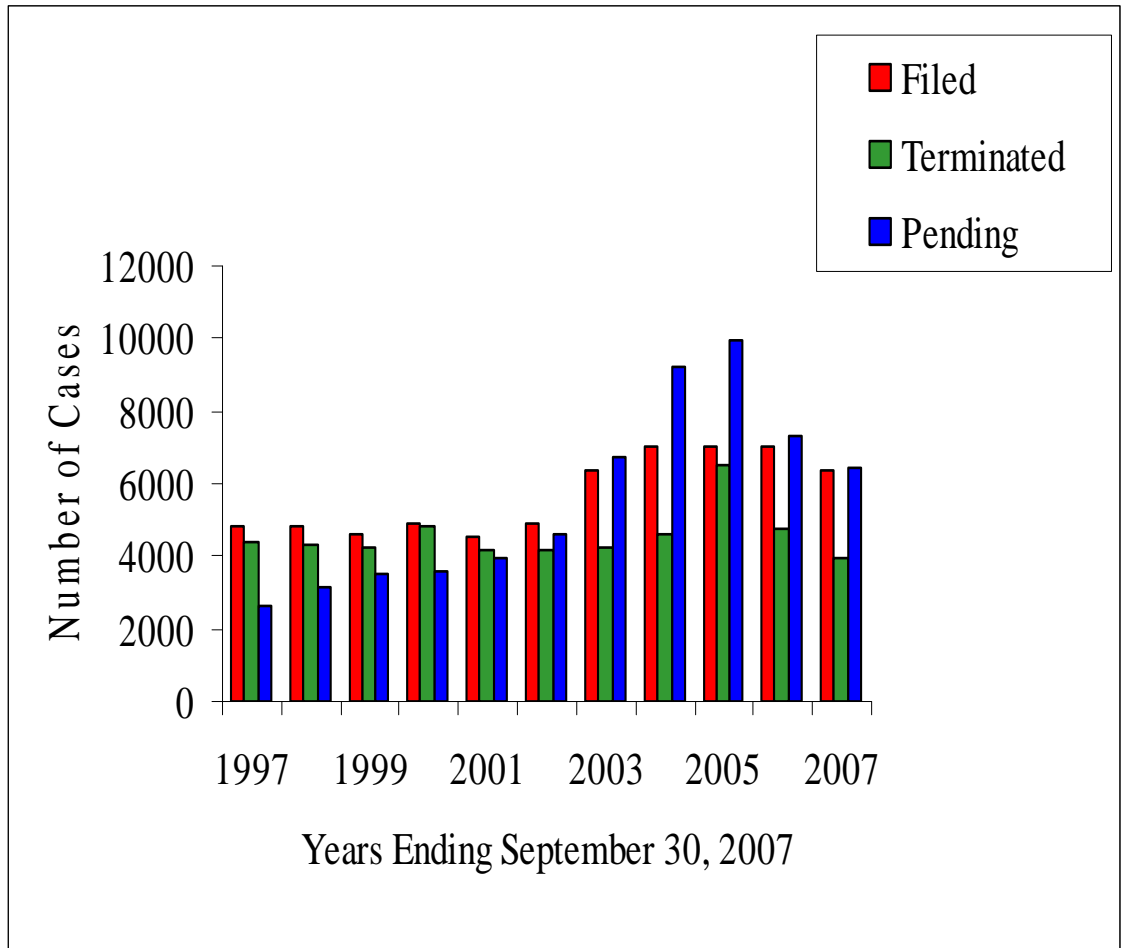


Table 2 and Figure 2 demonstrates the various measures that the Court of Appeals uses to manage its caseload. The inventory control index is the number of months it would require a court to close the total number of pending appeals as of the end of the year, at its monthly termination rate.

Table 2
MANAGEMENT OF CASELOAD

	2003	2004	2005	2006	2007
Terminations for 12 months ending September 30	4262	4611	6501	8969	7228
Filings for 12 months ending March 31	5843	6532	6839	7453	8251
Termination Rate	72.9%	70.6%	95.1%	120.3%	87.6%
Pending September 30	6767	9431	9614	7341	6447
Inventory Control Index (months)	19.1	24.5	18.4	10.3	10.7

2006 Numbers are revised to reflect changes in pending cases reported by the Administrative Office of the U.S. Courts.

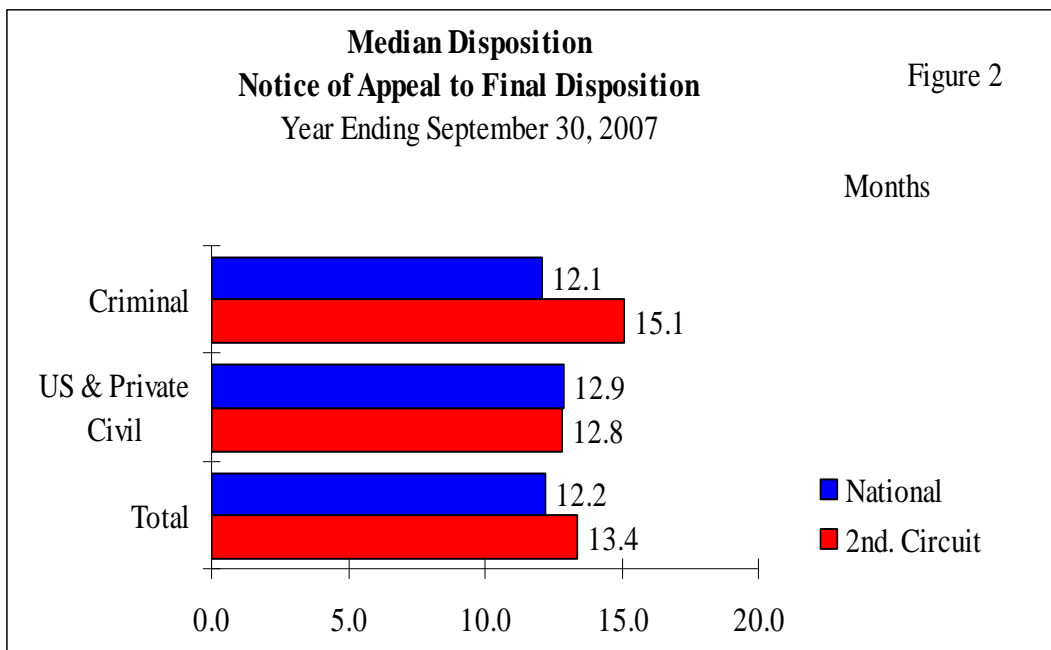


Table 3 reflects filings and case participation. A case participation is the number of times a judge participates in on case.

Table 3
FILINGS AND CASE PARTICIPATIONS
 Years ending September 30th.

	2002	2003	2004	2005	2006	2007
Filings	4870	6359	7008	7035	7029	6334
Case Participations	5890	5802	5331	6363	11382	8652
Percent Change	-3.7%	-1.5%	-8.1%	19.4%	78.9%	-24.0%

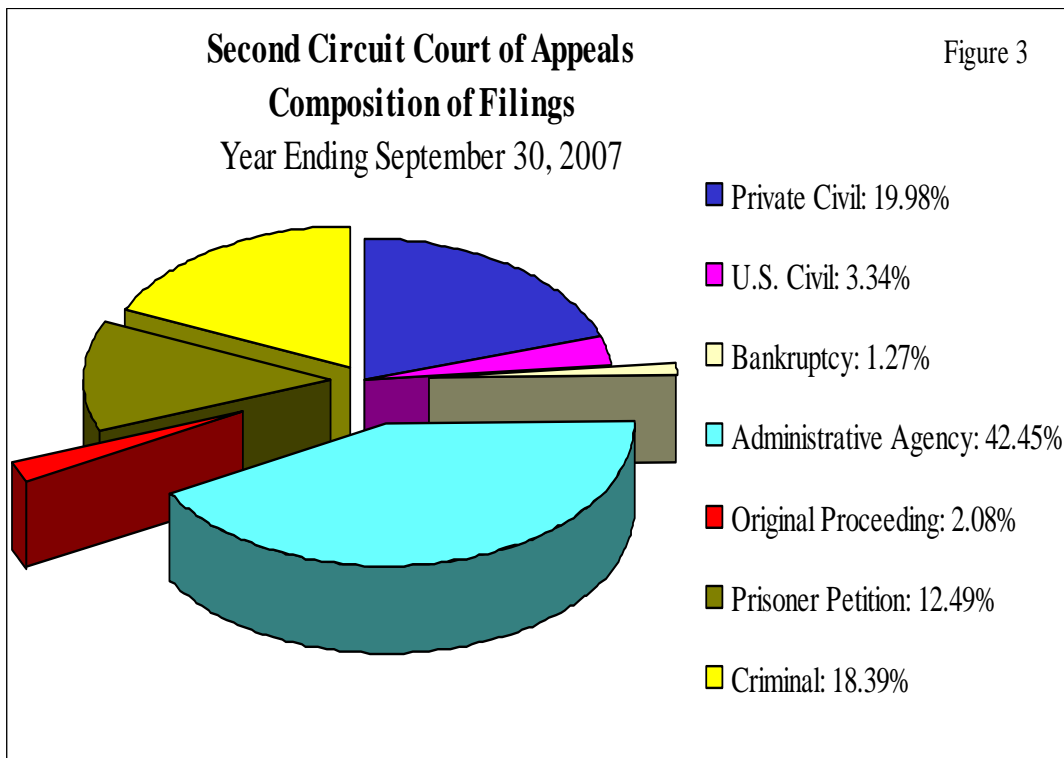
We know of no other Federal Appeals Court that allows pro se litigants other than incarcerated prisoners to argue.

Table 4
**METHOD OF RENDERING DECISIONS IN CASES
 TERMINATED AFTER ORAL HEARING OR SUBMISSION**
 Years ending September 30th.

Year	Total Decisions	Signed Opinions		Per Curiam		Summary Order and Oral Decision	
		Number	% Total	Number	% Total	Number	% Total
2006	3479	505	14.5%	103	3.0%	2871	82.5%
2007	2441	366	15.0%	88	3.6%	1987	81.4%

Table 5
COMPOSITION OF COURT OF APPEALS WORKLOAD
 Years ending September 30th.

	2002		2007	
	Number	Percent	Number	Percent
Private Civil	1540	31.6%	1415	22.3%
U.S. Civil	299	6.1%	241	3.8%
Bankruptcy	76	1.6%	100	1.6%
Administrative Agency	603	12.4%	2271	35.9%
Original Proceedings	289	5.9%	245	3.9%
Prisoner Petitions	1264	26.0%	1069	16.9%
Criminal	799	16.4%	993	15.7%
Total	4870	100%	6334	100%



STATISTICS

DISTRICT COURTS

Table 6
DISTRICT COURTS OF THE SECOND CIRCUIT
 Years Ending September 30th.

Authorized Judgeships. . . 62

Senior Judges. . .

42

	Civil Cases			Criminal Cases*			Total Cases		
	2006	2007	Change	2006	2007	Change	2006	2007	Change
Filed	23369	27165	16.2%	4689	4490	-4.2%	28058	31655	12.8%
Per Judgeship - Unweighted	335	415		81	78		416	493	
Per Judgeship - Weighted **	402	464	15.4%	75	73	-2.7%	477	537	12.6%
Terminated	21274	22771	7.0%	4706	4645	-1.3%	25980	27416	5.5%
Per Judgeship	343	367		76	75		419	442	
Pending	33797	37347	10.5%	11548	11401	-1.3%	45345	48748	7.5%
Per Judgeship	545	602		186	184		731	786	
Trials Completed	462	441	-4.5%	377	397	5.3%	839	838	-0.1%
Per Judgeship	7	7		6	6		14	14	
Inventory Control Index (Mos.)	19.1	19.7	0.6	29.4	29.5	0.0	20.9	21.3	1.9%
Median Time Filing to Disp. **	9.2	10.5	1.3	14.4	14.3	-0.1	#N/A	#N/A	#N/A
	Juror Utilization								
	2006	2007	Change						
Selected, Serving or Challenged	55.7%	52.2%	-3.5%						

* Data reflects felony cases only.

** Criminal Median Time is calculated on a defendant basis.

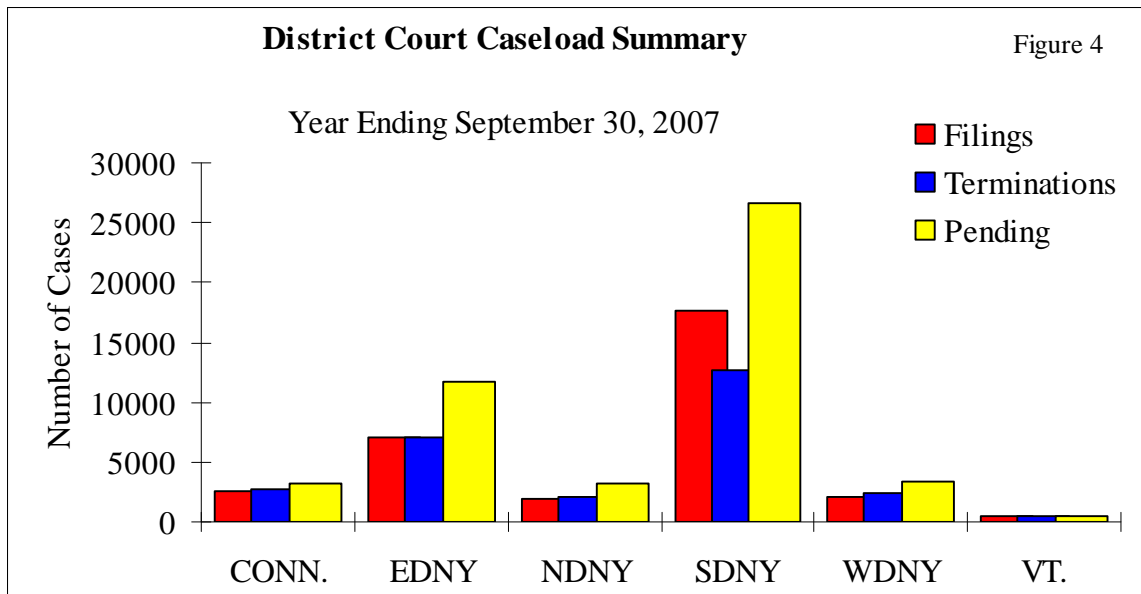


Table 7
**CHANGE IN DISTRICT COURT CIVIL CASES
 FILED AND TERMINATED**
 Years ending September 30th

	Filed			Terminated		
	2006	2007	Change	2006	2007	Change
Connecticut	2087	2056	-1.5%	2300	2362	2.7%
NDNY	1590	1453	-8.6%	1415	1689	19.4%
EDNY	6993	5751	-17.8%	5909	5940	0.5%
SDNY	10793	16125	49.4%	9766	10804	10.6%
WDNY	1631	1492	-8.5%	1568	1667	6.3%
Vermont	275	288	4.7%	316	309	-2.2%
Total	23369	27165	16.2%	21274	22771	7.0%

Table 8
CHANGE IN DISTRICT COURT CIVIL PENDING CASELOADS
 Years ending September 30th

	Civil Cases Pending		Change	
	2006	2007	Cases	Percentage
Connecticut	2732	2426	-306	-11.2%
NDNY	2681	2445	-236	-8.8%
EDNY	8353	8164	-189	-2.3%
SDNY	16248	21569	5321	32.7%
WDNY	2655	2480	-175	-6.6%
Vermont	284	263	-21	-7.4%
Total	32953	37347	4394	13.3%

* 2006 Numbers were revised to reflect changes in pending cases reported by the Administrative Office of the U.S. Courts.

Table 9
**FELONY DEFENDANTS
 FILINGS AND TERMINATIONS**
 Years ending September 30th.

	Filed			Terminated		
	2006	2007	Change	2006	2007	Change
Connecticut	456	443	-2.9%	405	412	1.7%
NDNY	494	480	-2.8%	430	425	-1.2%
EDNY	1216	1243	2.2%	1113	1125	1.1%
SDNY	1630	1489	-8.7%	1907	1796	-5.8%
WDNY	731	630	-13.8%	637	705	10.7%
Vermont	162	205	26.5%	214	182	-15.0%
Total	4689	4490	-4.2%	4706	4645	-1.3%

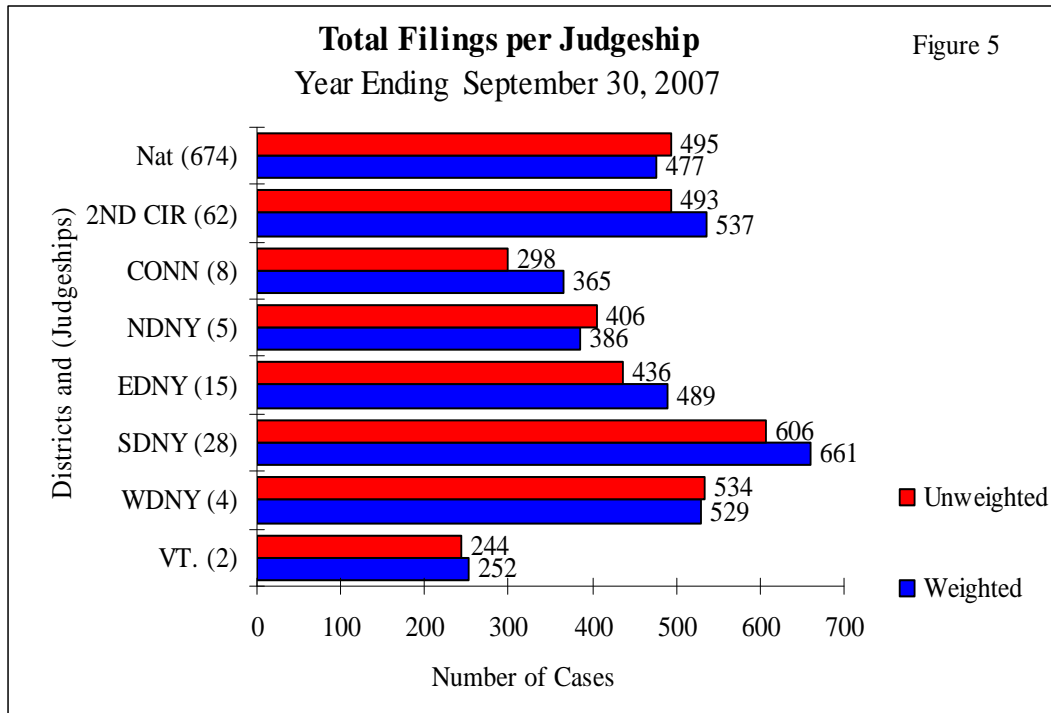
Table 10
FELONY DEFENDANTS PENDING
 Years ending September 30th

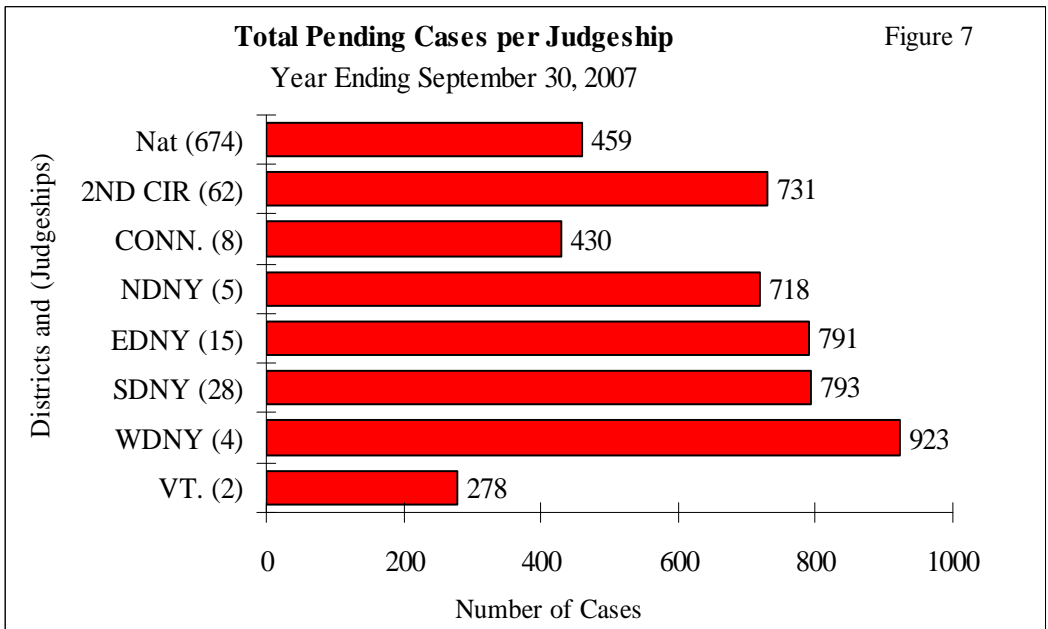
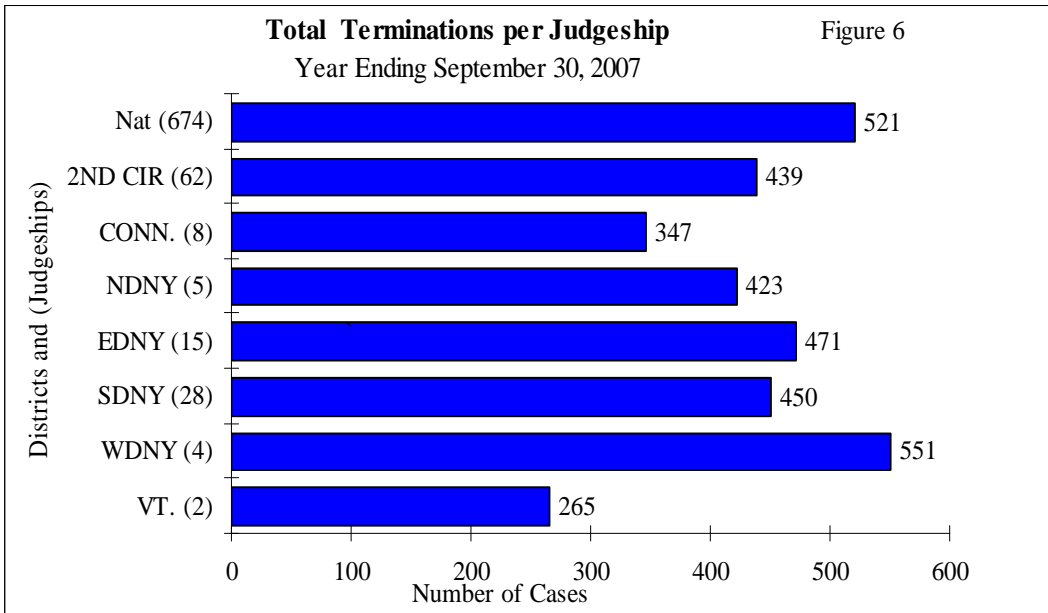
	Pending		Change	
	2006	2007	Defts.	Percentage
Connecticut	742	776	34	4.6%
NDNY	757	810	53	7.0%
EDNY	3354	3481	127	3.8%
SDNY	5428	5090	-338	-6.2%
WDNY	1047	947	-100	-9.6%
Vermont	277	297	20	7.2%
Total	11605	11401	-204	-1.8%

Table 11
MEDIAN TIME
FROM FILING TO DISPOSITION
(IN MONTHS)

Years ending September 30th.

	Civil Cases			Criminal Felony Defts.		
	2006	2007	Change	2006	2007	Change
Connecticut	11.6	10.5	-1.1	13.0	12.2	-0.8
NDNY	13.3	12.6	-0.7	9.4	8.9	-0.5
EDNY	10.5	10.8	0.3	15.6	17.0	1.4
SDNY	8.3	9.8	1.5	16.4	18.1	1.7
WDNY	10.9	14.0	3.1	8.2	8.5	0.3
Vermont	8.8	8.0	-0.8	14.7	14.0	-0.7
Total Six Districts	9.2	10.5	1.3	14.4	14.3	-0.1
National	8.3	8.6	0.3	7.1	7.0	-0.1





Trials Completed per Judgeship Year Ending September 30, 2007

Figure 8

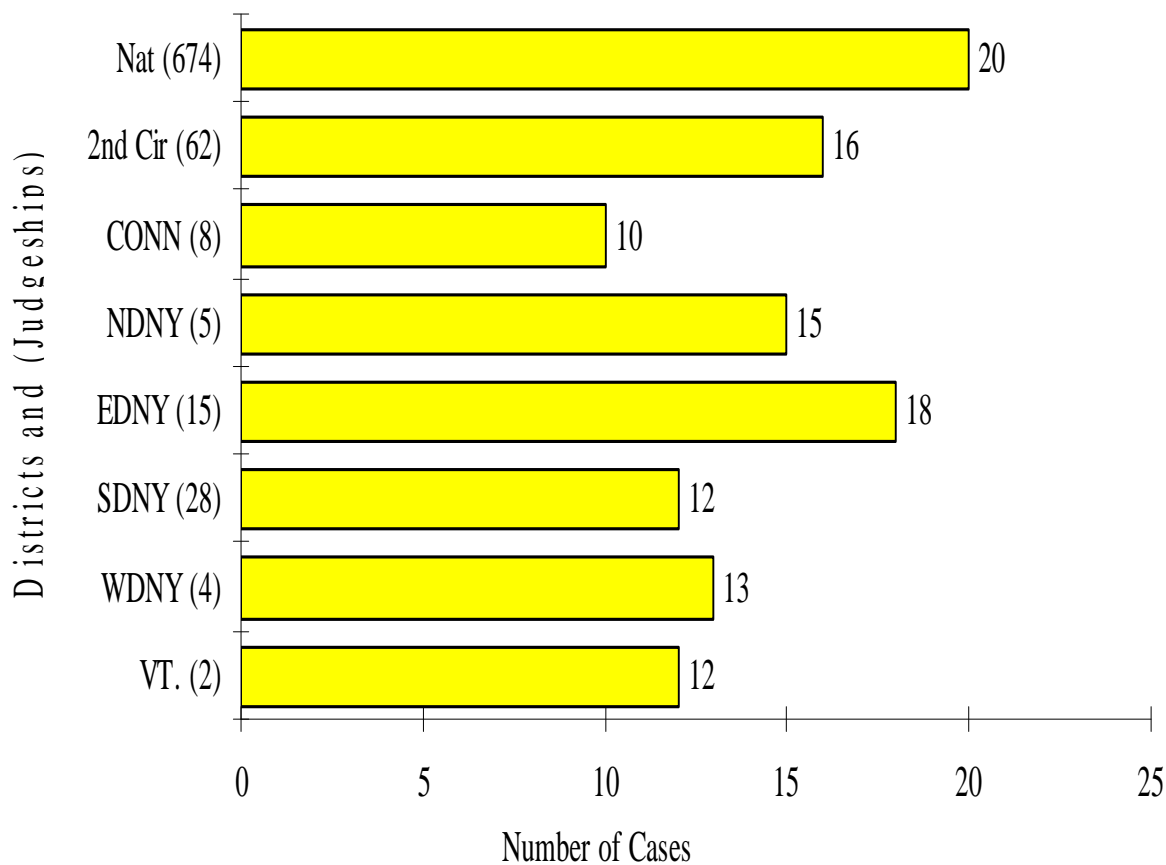


Table 12
TRIALS COMPLETED
 Years Ending September 30th.

	Civil			Criminal			Total		
	2006	2007	Change	2006	2007	Change	2006	2007	Change
Connecticut	70	61	-12.9%	29	22	-24.1%	99	83	-16.2%
NDNY	42	34	-19.0%	30	41	36.7%	72	75	4.2%
EDNY	105	132	25.7%	97	134	38.1%	202	266	31.7%
SDNY	204	189	-7.4%	169	152	-10.1%	373	341	-8.6%
WDNY	31	13	-58.1%	39	37	-5.1%	70	50	-28.6%
Vermont	10	12	20.0%	13	11	-15.4%	23	23	0.0%
2nd Circuit	462	441	-4.5%	377	397	5.3%	839	838	-0.1%
National	5121	5600	9.4%	7491	7849	4.8%	12612	13449	6.6%

Table 13
INVENTORY CONTROL INDEX*
 Years ending September 30th.

	2006	2007	Change
Connecticut	15.3	13.9	-1.4
NDNY	20.3	18.5	-1.8
EDNY	23.4	19.8	-3.6
SDNY	22.8	25.4	2.6
WDNY	20.1	17.3	-2.8
Vermont	12.6	13.7	1.1
Total Six Districts	20.9	21.3	0.4
National	11.4	13.4	2.0

*The inventory control index is the number of months it would require a court to close the total number of appeals as of the end of the year at its monthly termination rate

2006 Numbers are revised to reflect changes in civil pending cases reported by the Administrative Office of the U.S. Courts.

Table 14
CIVIL CASES PENDING THREE YEARS AND OVER
 Years ending September 30th.

	Total Pending		3 Years and Over			
			2006		2007	
	2006	2007	Number	Percent	Number	Percent
Connecticut	2707	2426	339	12.5%	252	10.4%
NDNY	2819	2445	435	15.4%	327	13.4%
EDNY	8479	8164	831	9.8%	752	9.2%
SDNY	16852	21569	3107	18.4%	2430	11.3%
WDNY	2626	2480	456	17.4%	494	19.9%
Vermont	314	263	26	8.3%	16	6.1%
2nd Circuit	33797	37347	5194	15.4%	4271	11.4%
National	251832	265082	27577	11.0%	17446	6.6%

Table 15
PETIT JUROR USAGE ON DAYS
JURORS WERE SELECTED FOR TRIAL
 Years Ending September 30th.

	2006	2007	Change
Connecticut	67.6%	64.5%	-3.1%
NDNY	78.6%	79.7%	1.1%
EDNY	59.4%	61.5%	2.1%
SDNY	39.6%	60.2%	20.6%
WDNY	63.1%	62.2%	-0.9%
Vermont	63.8%	55.6%	-8.2%
2nd Circuit	55.7%	52.2%	-3.5%
National	61.9%	62.8%	0.9%

STATISTICS
DISTRICT OF
CONNECTICUT

Table 16

DISTRICT OF CONNECTICUT

Years Ending September 30th.

Authorized Judgeships 8

Senior Judges 6

	Civil Cases			Criminal Cases*			Total Cases		
	2006	2007	Change	2006	2007	Change	2006	2007	Change
Filed	2087	2056	-1.5%	456	443	-2.9%	2543	2499	-1.7%
Per Judgeship - Unweighted	244	240		60	58		304	298	
Per Judgeship - Weighted **	315	306	-2.9%	59	59	0.0%	374	365	-2.4%
Terminated	2300	2362	2.7%	405	412	1.7%	2705	2774	2.6%
Per Judgeship	288	295		51	52		338	347	
Pending	2732	2426	-11.2%	742	776	4.6%	3474	3202	-7.8%
Per Judgeship	338	303		92	97		430	400	
Trials Completed	70	61	-12.9%	29	22	-24.1%	99	83	-16.2%
Per Judgeship	9	8		4	3		12	10	
Inventory Control Index (Mos.)	14.3	12.3	-1.9	22.0	22.6	0.6	15.4	13.9	-1.6
Median Time Filing to Disp. **	11.6	10.5	-1.1	13.0	12.2	-0.8	#N/A	#N/A	#N/A
	Juror Utilization								
	2006	2007	Change						
Selected, Serving or Challenged	67.6%	64.5%	-3.1%						

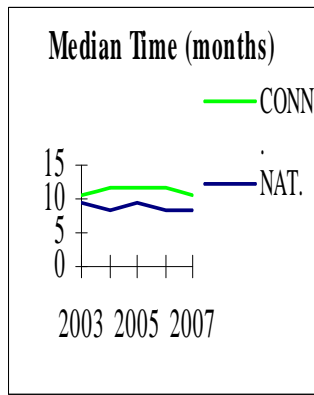
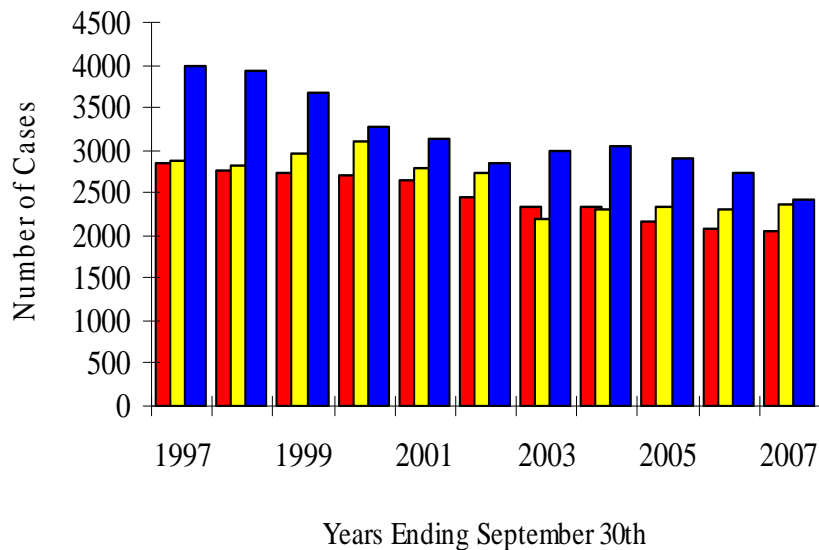
* Data reflects felony cases only, except for median time.

** Criminal Median Time is calculated on a defendant basis.

*** 2007 Numbers were revised to reflect changes in pending cases reported by the Administrative Office of the U.S. Courts.

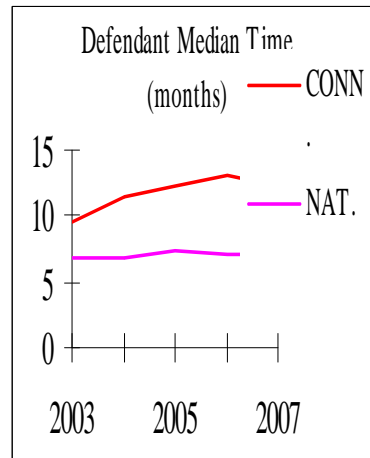
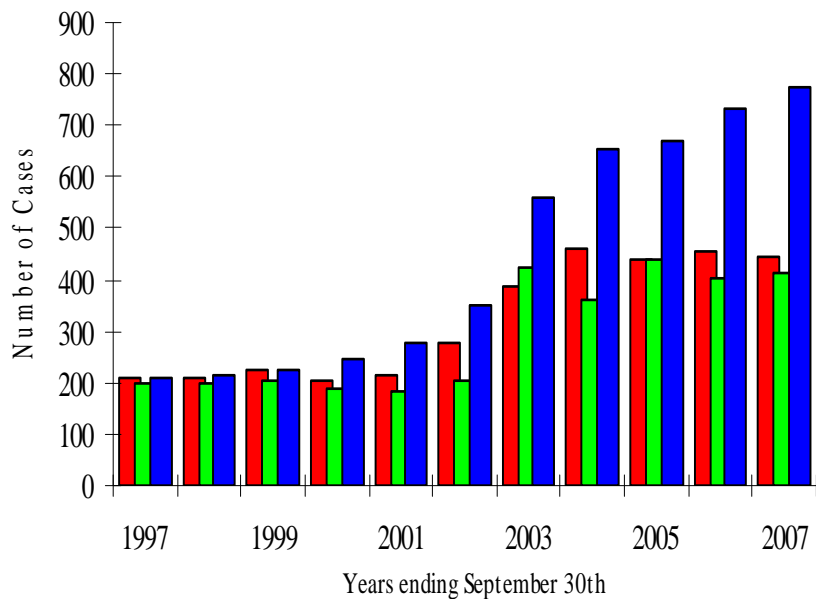
District of Connecticut - Civil Cases

Figure 9



District of Connecticut - Criminal Cases

Figure 10



STATISTICS

EASTERN DISTRICT

OF NEW YORK

Table 17

EASTERN DISTRICT OF NEW YORK

Years Ending September 30th.

Authorized Judgeships.

15

Senior Judges.

8

Civil Cases

Criminal Cases*

Total Cases

2006	2007	Change
6993	5751	-17.8%
365	351	
444	405	-8.8%
5909	5940	0.5%
394	396	
8353	8164	-2.3%
565	544	
105	132	25.7%
7	9	
17.0	16.5	-0.5
10.5	10.8	0.3

2006	2007	Change
1216	1243	2.2%
83	85	
78	84	7.7%
1113	1125	1.1%
74	75	
3354	3481	3.8%
226	232	
97	134	38.1%
6	9	
36.2	37.1	1.0
15.6	17.0	1.4

2006	2007	Change
8209	6994	-14.8%
448	436	
522	489	-6.3%
7022	7065	0.6%
468	471	
11707	11645	-0.5%
791	776	
202	266	31.7%
13	18	
20.0	19.8	-0.2
#N/A	#N/A	#N/A

Juror Utilization

2006	2007	Change
59.4%	61.5%	2.1%

Filed
 Per Judgeship - Unweighted
 Per Judgeship - Weighted **
 Terminated
 Per Judgeship
 Pending***
 Per Judgeship
 Trials Completed
 Per Judgeship
 Inventory Control Index (Mos.)
 Median Time Filing to Disp. **

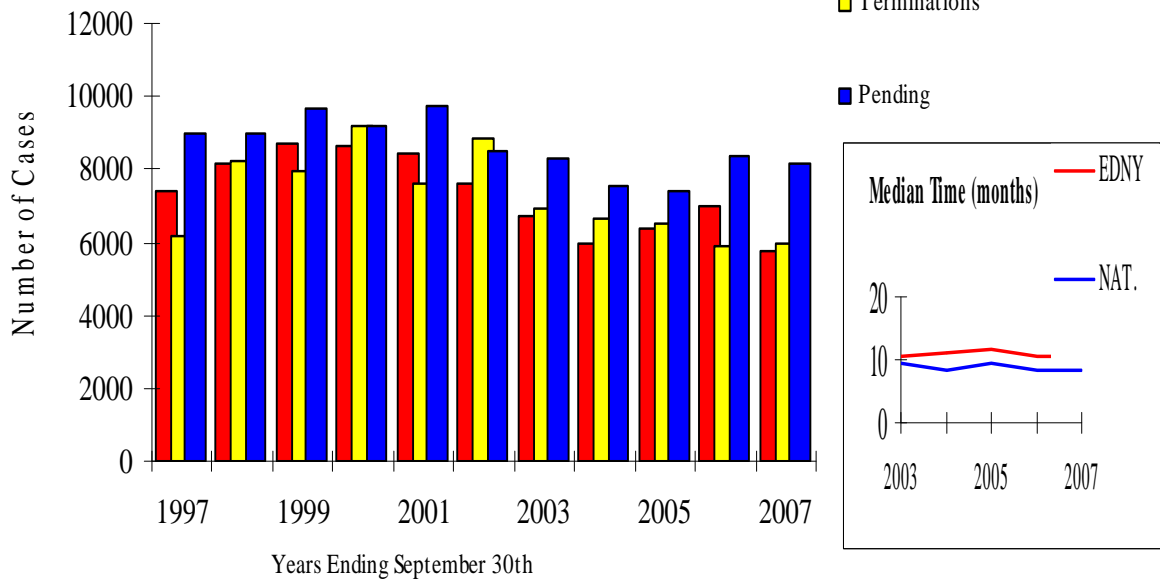
* Data reflects felony cases only.

** Criminal Median Time is calculated on a defendant basis.

*** 2006 Numbers were revised to reflect changes in pending cases reported by the Administrative Office of the U.S. Courts.

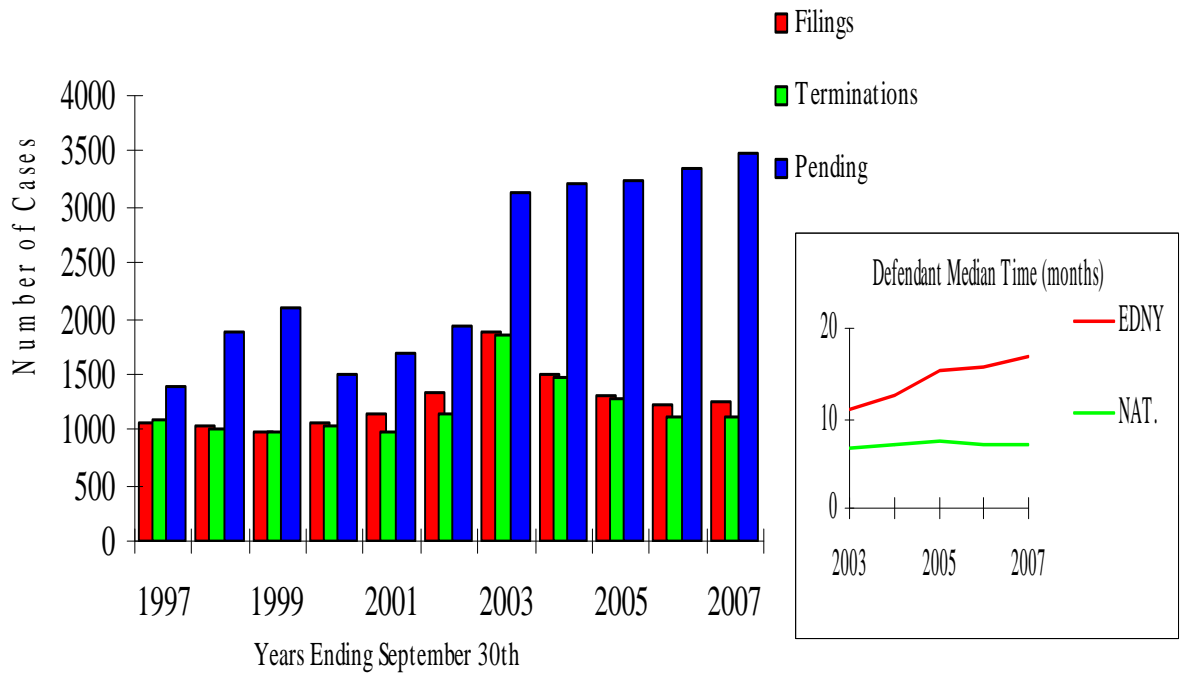
Eastern District of New York - Civil Cases

Figure 11



Eastern District of New York - Criminal Cases

Figure 12



STATISTICS

NORTHERN DISTRICT

OF NEW YORK

Table 18

NORTHERN DISTRICT OF NEW YORK

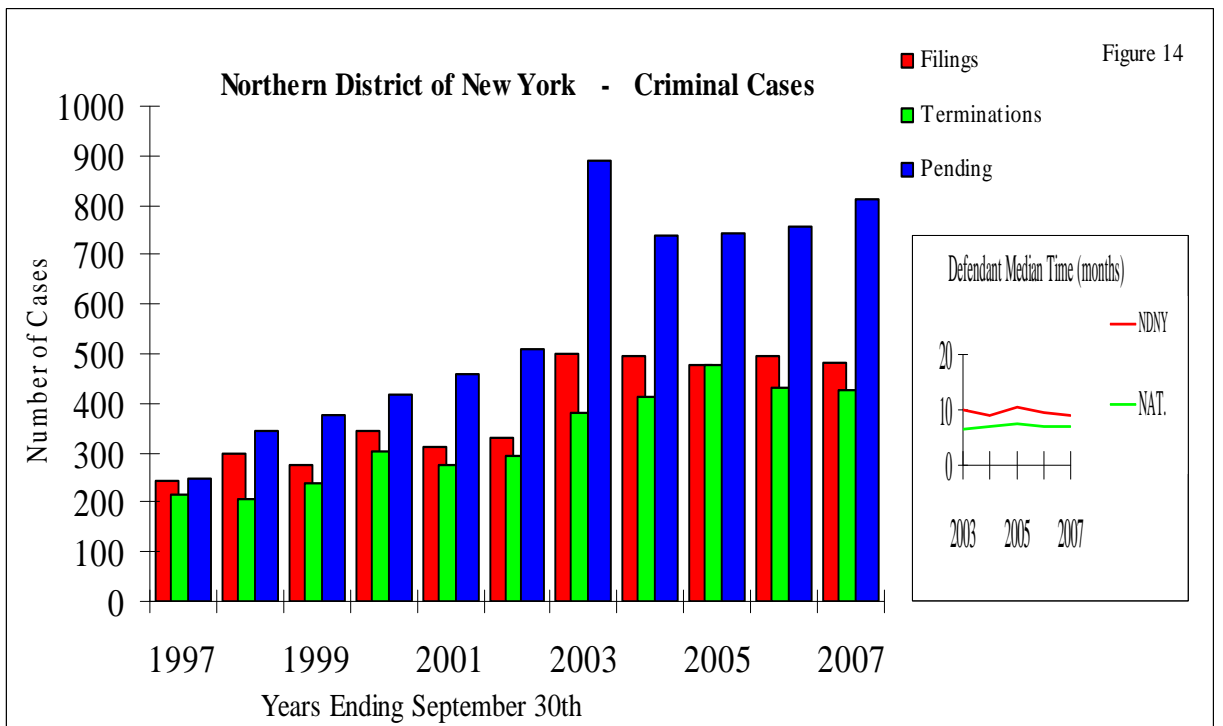
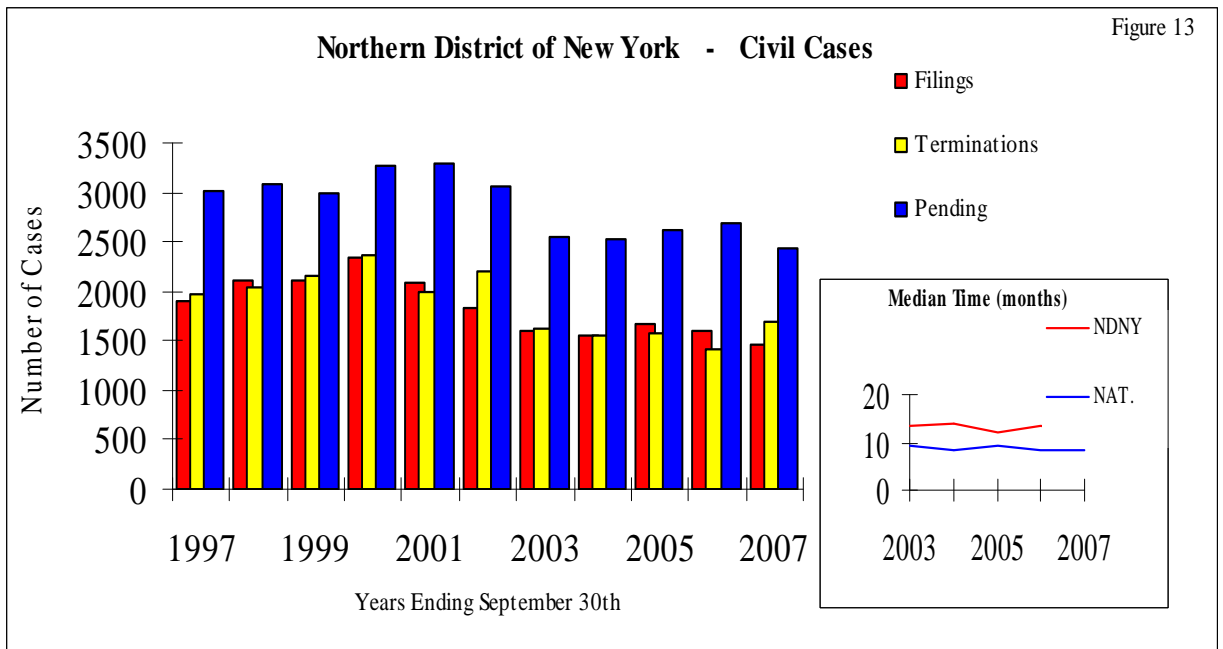
Years Ending September 30th.

Authorized Judgeships. 5

Senior Judges. 3

	Civil Cases			Criminal Cases*			Total Cases		
	2006	2007	Change	2006	2007	Change	2006	2007	Change
Filed	1590	1453	-8.6%	494	480	-2.8%	2084	1933	-7.2%
Per Judgeship - Unweighted	305	281		112	125		417	406	-2.6%
Per Judgeship - Weighted **	314	289	-8.0%	102	97	-4.9%	416	386	-7.2%
Terminated	1415	1689	19.4%	430	425	-1.2%	1845	2114	14.6%
Per Judgeship	283	338		86	85		369	423	
Pending	2819	2445	-13.3%	773	810	4.8%	3592	3255	-9.4%
Per Judgeship	564	489		155	162		718	651	
Trials Completed	42	34	-19.0%	30	41	36.7%	72	75	4.2%
Per Judgeship	8	7		6	8		14	15	
Inventory Control Index (Mos.)	23.9	17.4	-6.5	21.6	22.9	1.3	23.4	18.5	-4.9
Median Time Filing to Disp. **	13.3	12.6	-0.7	9.4	8.9	-0.5	#N/A	#N/A	#N/A
	Juror Utilization								
	2006	2007	Change						
Selected, Serving or Challenged	78.6%	79.7%	1.1%						

* Data reflects felony cases only.



STATISTICS

SOUTHERN DISTRICT

OF NEW YORK

Table 19

SOUTHERN DISTRICT OF NEW YORK

Years Ending September 30th.

Authorized Judgeships. 28

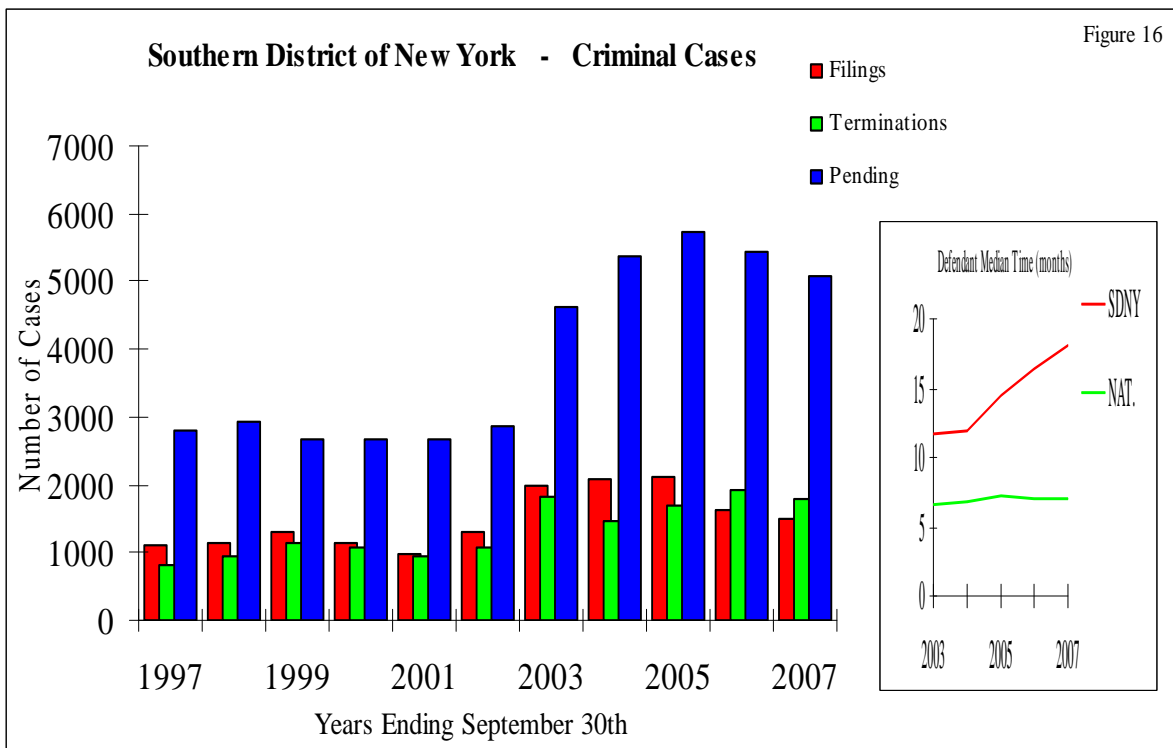
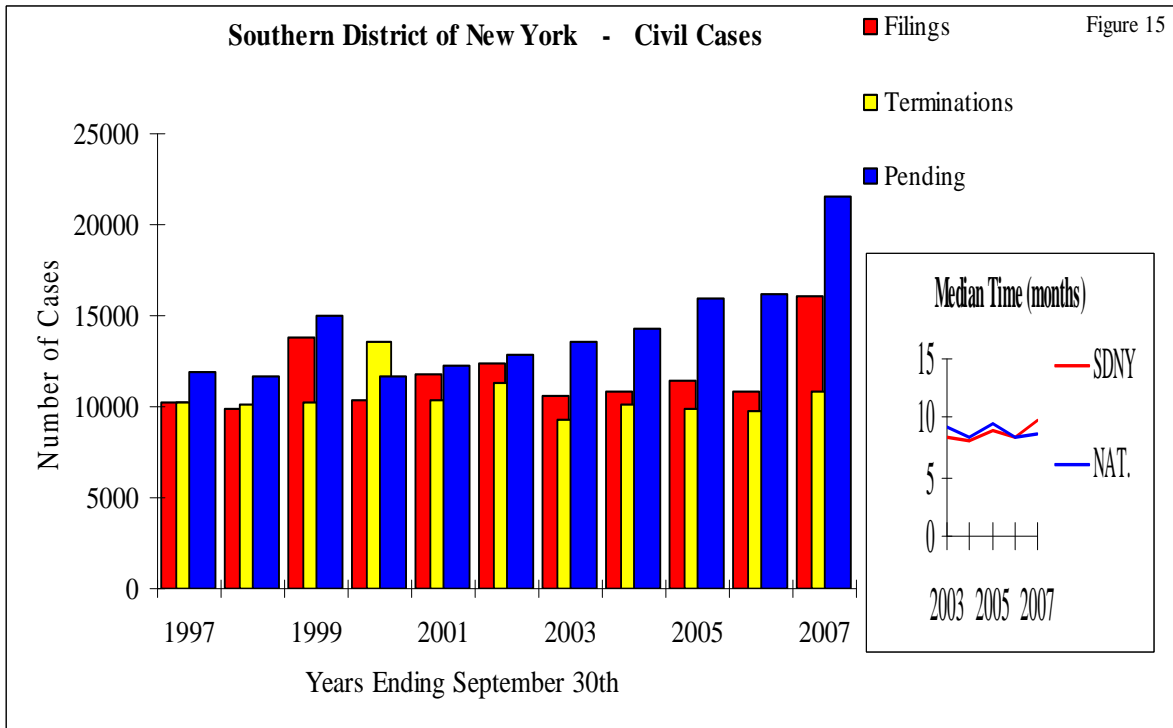
Senior Judges. 21

	Civil Cases			Criminal Cases*			Total Cases		
	2006	2007	Change	2006	2007	Change	2006	2007	Change
Filed	10793	16125	49.4%	1630	1489	-8.7%	12423	17614	41.8%
Per Judgeship - Unweighted	356	551		61	55		417	606	45.3%
Per Judgeship - Weighted **	441	607	37.6%	58	54	-6.9%	499	661	32.5%
Terminated	9766	10804	10.6%	1907	1796	-5.8%	11673	12600	7.9%
Per Judgeship	349	386		68	64		417	450	
Pending***	16248	21569	32.7%	5428	5090	-6.2%	21676	26659	23.0%
Per Judgeship	602	770		191	182		793	952	
Trials Completed	204	189	-7.4%	169	152	-10.1%	373	341	-8.6%
Per Judgeship	7	7		6	5		13	12	
Inventory Control Index (Mos.)	20.7	24.0	3.2	33.6	34.0	0.4	22.3	25.4	3.1
Median Time Filing to Disp. **	8.3	9.8	1.5	16.4	18.1	1.7	#N/A	#N/A	#N/A
	Juror Utilization								
	2006	2007	Change						
Selected, Serving or Challenged	39.6%	60.2%	20.6%						

* Data reflects felony cases only.

** Criminal Median Time is calculated on a defendant basis.

*** 2006 Numbers were revised to reflect changes in pending cases reported by the Administrative Office of the U.S. Courts.



STATISTICS

WESTERN DISTRICT

OF NEW YORK

Table 20

WESTERN DISTRICT OF NEW YORK

Years Ending September 30th.

Authorized Judgeships 4

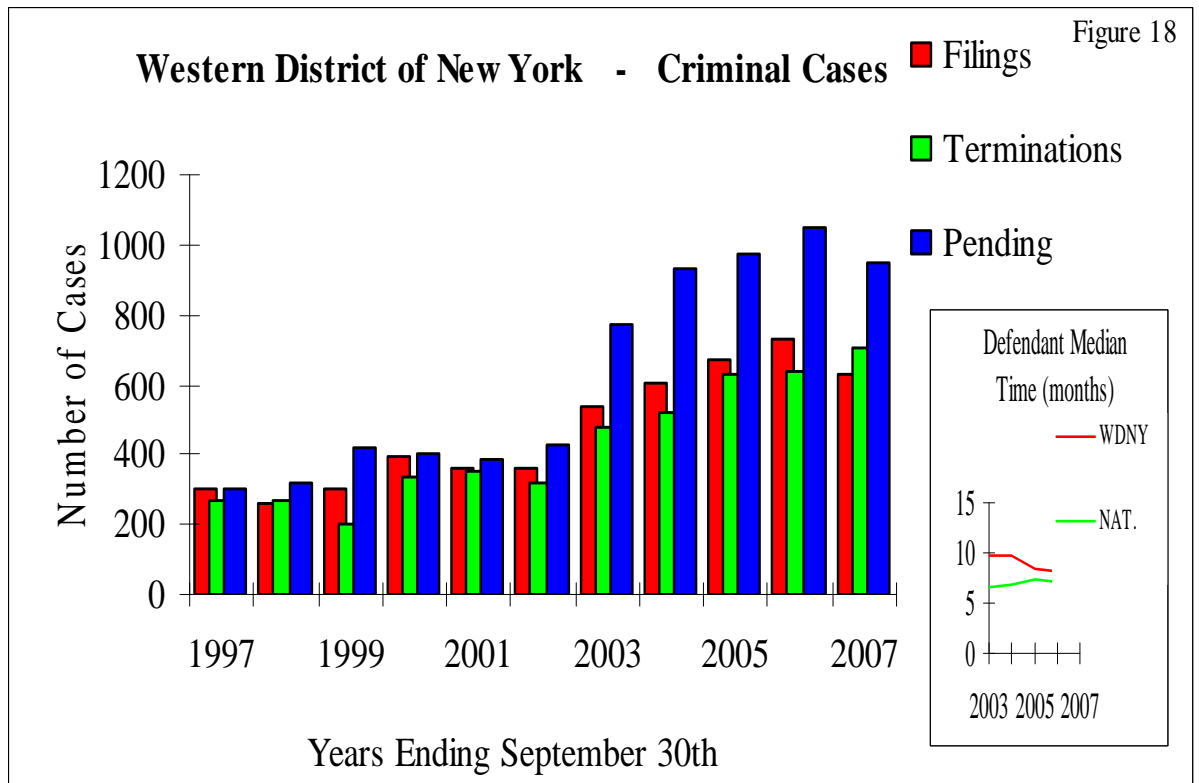
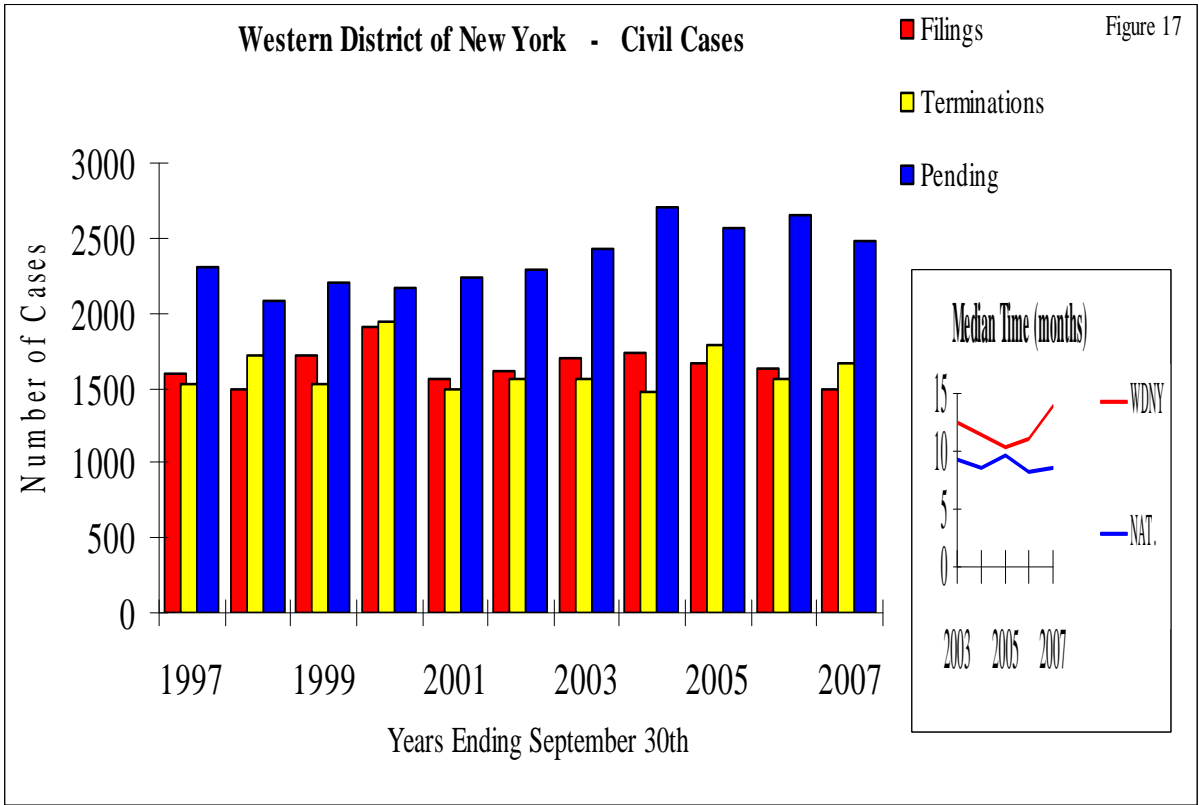
Senior Judges . . . 3

	Civil Cases			Criminal Cases*			Total Cases		
	2006	2007	Change	2006	2007	Change	2006	2007	Change
Filed	1631	1492	-8.5%	731	630	-13.8%	2362	2122	-10.2%
Per Judgeship - Unweighted	397	363		211	171		608	534	
Per Judgeship - Weighted **	394	376	-4.6%	181	153	-15.5%	575	529	-8.0%
Terminated	1568	1667	6.3%	637	705	10.7%	2205	2372	7.6%
Per Judgeship	392	417		159	176		551	593	
Pending***	2655	2480	-6.6%	1047	947	-9.6%	3702	3427	-7.4%
Per Judgeship	657	620		266	237		923	857	
Trials Completed	31	13	-58.1%	39	37	-5.1%	70	50	-28.6%
Per Judgeship	8	3		10	9		18	13	
Inventory Control Index (Mos.)	20.1	17.9	-2.2	20.1	16.1	-3.9	20.1	17.3	-2.8
Median Time Filing to Disp. **	10.9	14.0	3.1	8.2	8.5	0.3	#N/A	#N/A	#N/A
	Juror Utilization								
	2006	2007	Change						
Selected, Serving or Challenged	63.1%	62.2%	-0.9%						

* Data reflects felony cases only.

** Criminal Median Time is calculated on a defendant basis.

*** 2006 Numbers were revised to reflect changes in pending cases reported by the Administrative Office of the U.S. Courts.



STATISTICS

DISTRICT OF

VERMONT

Table 21

DISTRICT OF VERMONT

Years Ending September 30th.

Authorized Judgeships. 2

Senior Judges.

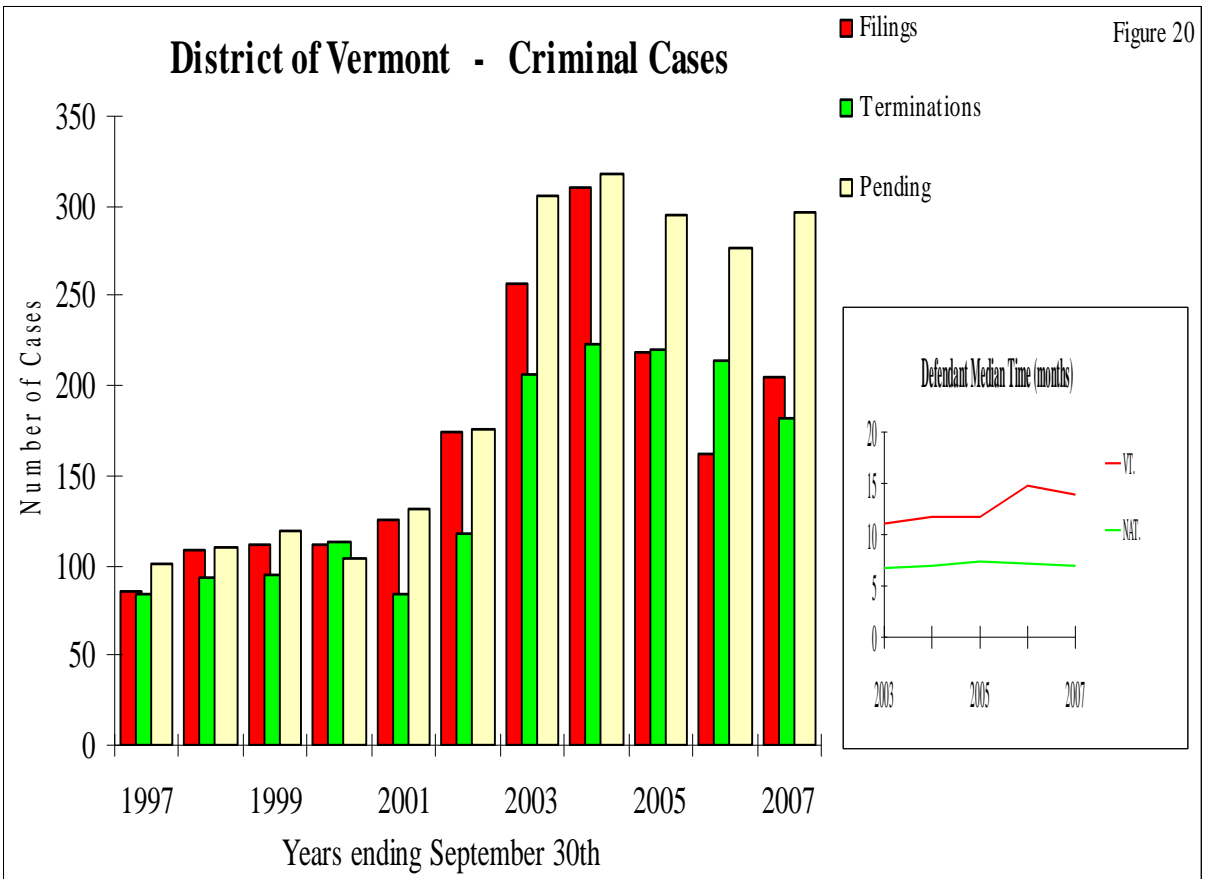
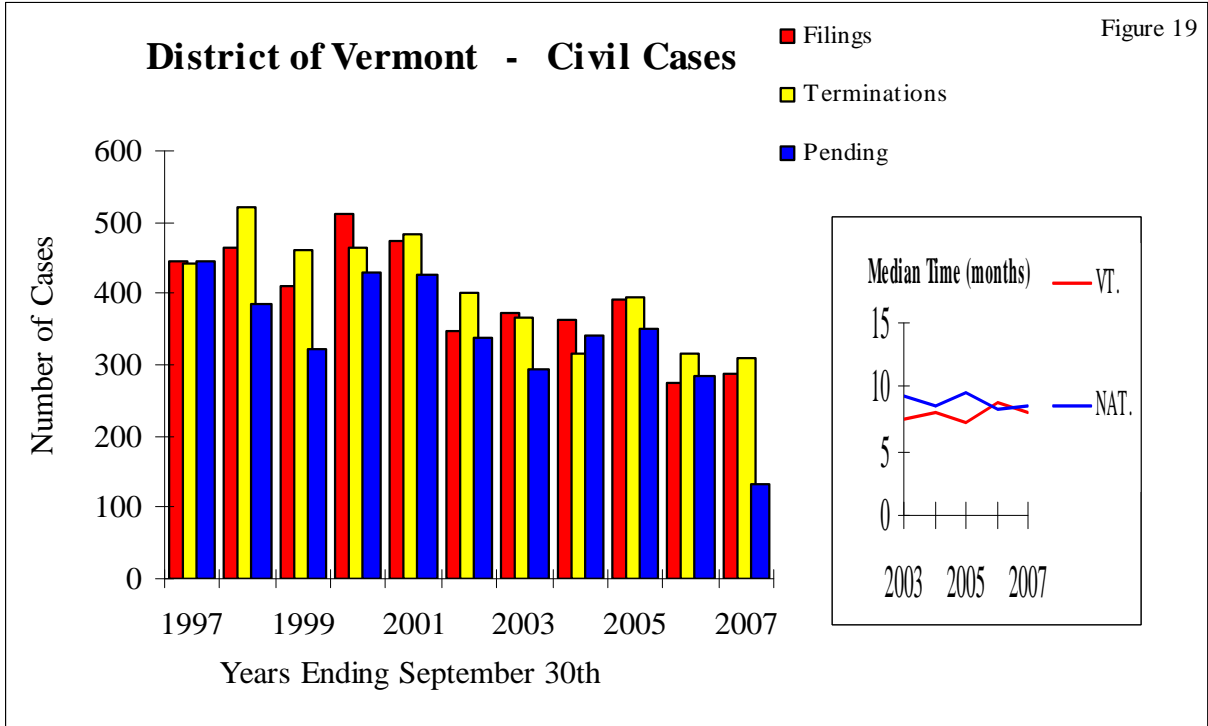
0

	Civil Cases			Criminal Cases*			Total Cases		
	2006	2007	Change	2006	2007	Change	2006	2007	Change
Filed	275	288	4.7%	162	205	26.5%	437	493	12.8%
Per Judgeship - Unweighted	128	139		83	105		211	244	
Per Judgeship - Weighted **	136	152	11.8%	76	100	31.6%	212	252	18.9%
Terminated	316	309	-2.2%	214	182	-15.0%	530	491	-7.4%
Per Judgeship	158	155		107	91		265	246	
Pending***	284	263	-7.4%	277	297	7.2%	561	560	-0.2%
Per Judgeship	157	132		121	149		278	280	
Trials Completed	10	12	20.0%	13	11	-15.4%	23	23	0.0%
Per Judgeship	5	6		7	6		12	12	
Inventory Control Index (Mos.)	11.9	10.2	-1.7	13.6	19.6	6.0	12.7	13.7	1.0
Median Time Filing to Disp. **	8.8	8.0	-0.8	14.7	14.0	-0.7	#N/A	#N/A	#N/A
	Juror Utilization								
	2006	2007	Change						
Selected, Serving or Challenged	63.8%	55.6%	-8.2%						

* Data reflects felony cases only.

** Criminal Median Time is calculated on a defendant basis.

*** 2006 Numbers were revised to reflect changes in pending cases reported by the Administrative Office of the U.S. Courts.



STATISTICS

MAGISTRATE JUDGES

Table 22

MAGISTRATE JUDGE ACTIVITY IN THE SECOND CIRCUIT

Full Time Magistrate Judges 43 Part Time Magistrate Judges 2

	Years ending		Change
	9/30/06	9/30/07	
Civil Consent Trials Etc. Pursuant to Section 636(c)	708	828	16.9%
Assignment as a Special Master Pursuant to Section 636(b)(2)	176	139	-21.0%
Evidentiary Proceedings Conducted Pursuant to Section 636(b)(1)(B)	195	192	-1.5%
Matters Disposed of Pursuant to Title 28 U.S.C. Section 636(a)			
Search Warrants	2053	2247	9.4%
Summonses	96	139	44.8%
Arrest Warrants	2522	2455	-2.7%
Bail Reviews	533	605	13.5%
Appearances & Preliminary Exams	5046	4411	-12.6%
Matters Disposed of Pursuant to Title 28 U.S.C. Section 636(b)			
Criminal Cases			
Post Indictment Arraignments	2212	2514	13.7%
Pretrial Conferences	3396	2357	-30.6%
Motions	176	139	-21.0%
Grand Jury Sessions	1635	1106	-32.4%
Civil Cases			
Prisoner Petitions	697	602	-13.6%
Pretrial Conferences	12270	13627	11.1%
Motions	864	896	3.7%
Social Security	185	179	-3.2%
Defendants Disposed of			
Misdemeanor	176	151	-14.2%
Petty Offense	1035	897	-13.3%

Table 23
MAGISTRATE JUDGE ACTIVITY IN THE DISTRICT OF CONNECTICUT

Full Time Magistrate Judges 5

Part Time Magistrate Judges 0

	Years ending		Change	% 2007 Cir. Total
	9/30/06	9/30/07		
Civil Consent Trials Etc. Pursuant to Section 636(c)	36	45	25.0%	5.4%
Assignment as a Special Master Pursuant to Section 636(b)(2)	24	17	-	12.2%
Evidentiary Proceedings Conducted Pursuant to Section 636(b)(1)(B)	94	83	-11.7%	43.2%
Matters Disposed of Pursuant to Title 28 U.S.C. Section 636(a)				
Search Warrants	427	399	-6.6%	17.8%
Summonses	8	3	-62.5%	2.2%
Arrest Warrants	230	134	-41.7%	5.5%
Bail Reviews	79	66	-16.5%	10.9%
Appearances & Preliminary Exams	447	352	-21.3%	8.0%
Matters Disposed of Pursuant to Title 28 U.S.C. Section 636(b)				
Criminal Cases				
Post Indictment Arraignments	342	267	-21.9%	10.6%
Pretrial Conferences	8	1	-87.5%	0.0%
Motions	24	17	-29.2%	12.2%
Grand / Other Jury Sessions	515	86	-83.3%	7.8%
Civil Cases				
Prisoner Petitions	14	15	7.1%	2.5%
Pretrial Conferences	415	257	-38.1%	1.9%
Motions	127	126	-0.8%	14.1%
Social Security	43	36	-16.3%	20.1%
Defendants Disposed of				
Misdemeanor	11	1	-90.9%	0.7%
Petty Offense	150	105	-30.0%	11.7%

Table 24

MAGISTRATE JUDGE ACTIVITY IN THE NORTHERN DISTRICT OF NEW YORK

Full Time Magistrate Judges 5

Part Time Magistrate Judges 1

	Years ending		Change	% 2007 Cir. Total
	9/30/06	9/30/07		
Civil Consent Trials Etc. Pursuant to Section 636(c)	26	68	161.5%	8.2%
Assignment as a Special Master Pursuant to Section 636(b)(2)	0	0	-	0.0%
Evidentiary Proceedings Conducted Pursuant to Section 636(b)(1)(B)	4	3	-	1.6%
Matters Disposed of Pursuant to Title 28 U.S.C. Section 636(a)				
Search Warrants	200	211	5.5%	9.4%
Summonses	20	61	205.0%	43.9%
Arrest Warrants	180	295	63.9%	12.0%
Bail Reviews	64	44	-31.3%	7.3%
Appearances & Preliminary Exams	589	655	11.2%	14.8%
Matters Disposed of Pursuant to Title 28 U.S.C. Section 636(b)				
Criminal Cases				
Post Indictment Arraignments	306	319	4.2%	12.7%
Pretrial Conferences	18	18	0.0%	0.8%
Motions	0	0	#DIV/0!	0.0%
Grand Jury Sessions	110	100	-9.1%	9.0%
Civil Cases				
Prisoner Petitions	171	220	28.7%	36.5%
Pretrial Conferences	1109	1116	0.6%	8.2%
Motions	68	18	-73.5%	2.0%
Social Security	73	54	-26.0%	30.2%
Defendants Disposed of				
Misdemeanor	49	41	-16.3%	27.2%
Petty Offense	239	299	25.1%	33.3%

Table 25
MAGISTRATE JUDGE ACTIVITY IN THE EASTERN DISTRICT OF NEW YORK

Full Time Magistrate Judges 16

Part Time Magistrate Judges 0

	Years ending		Change	% 2007 Cir. Total
	9/30/06	9/30/07		
Civil Consent Trials Etc. Pursuant to Section 636(c)	260	370	42.3%	44.7%
Assignment as a Special Master Pursuant to Section 636(b)(2)	5	10	100.0%	7.2%
Evidentiary Proceedings Conducted Pursuant to Section 636(b)(1)(B)	34	53	55.9%	27.6%
Matters Disposed of Pursuant to Title 28 U.S.C. Section 636(a)				
Search Warrants	462	487	5.4%	21.7%
Summonses	2	0	-100.0%	0.0%
Arrest Warrants	412	580	40.8%	23.6%
Bail Reviews	78	195	150.0%	32.2%
Appearances & Preliminary Exams	1033	1157	12.0%	26.2%
Matters Disposed of Pursuant to Title 28 U.S.C. Section 636(b)				
Criminal Cases				
Post Indictment Arraignments	682	951	39.4%	37.8%
Pretrial Conferences	158	194	22.8%	8.2%
Motions	5	10	100.0%	7.2%
Grand Jury Sessions	231	299	29.4%	27.0%
Civil Cases				
Prisoner Petitions	115	34	-70.4%	5.6%
Pretrial Conferences	7456	7798	4.6%	57.2%
Motions	283	332	17.3%	37.1%
Social Security	0	1	#DIV/0!	0.6%
Defendants Disposed of				
Misdemeanor	10	11	10.0%	7.3%
Petty Offense	265	253	-4.5%	28.2%

Table 26

MAGISTRATE JUDGE ACTIVITY IN THE SOUTHERN DISTRICT OF NEW YORK

Full Time Magistrate Judges 14

Part Time Magistrate Judges 1

	Years ending		Change	% 2007 Cir. Total
	9/30/06	9/30/07		
Civil Consent Trials Etc. Pursuant to Section 636(c)	222	189	-14.9%	22.8%
Assignment as a Special Master Pursuant to Section 636(b)(2)	34	30	-11.8%	21.6%
Evidentiary Proceedings Conducted Pursuant to Section 636(b)(1)(B)	15	8	-46.7%	4.2%
Matters Disposed of Pursuant to Title 28 U.S.C. Section 636(a)				
Search Warrants	673	827	22.9%	36.8%
Summonses	0	27	#DIV/0!	19.4%
Arrest Warrants	803	734	-8.6%	29.9%
Bail Reviews	120	137	14.2%	22.6%
Appearances & Preliminary Exams	1950	1445	-25.9%	32.8%
Matters Disposed of Pursuant to Title 28 U.S.C. Section 636(b)				
Criminal Cases				
Post Indictment Arraignments	442	543	22.9%	21.6%
Pretrial Conferences	6	8	33.3%	0.3%
Motions	34	30	-11.8%	21.6%
Grand Jury Sessions	580	434	-25.2%	39.2%
Civil Cases				
Prisoner Petitions	300	224	-25.3%	37.2%
Pretrial Conferences	2598	3769	45.1%	27.7%
Motions	321	333	3.7%	37.2%
Social Security	36	35	-2.8%	19.6%
Defendants Disposed of				
Misdemeanor	41	41	0.0%	27.2%
Petty Offense	240	182	-24.2%	20.3%

Table 27
 MAGISTRATE JUDGE ACTIVITY IN THE WESTERN DISTRICT OF NEW YORK

Full Time Magistrate Judges 7

Part Time Magistrate Judges 0

	Years ending		Change	% 2007 Cir. Total
	9/30/06	9/30/07		
Civil Consent Trials Etc. Pursuant to Section 636(c)	126	131	4.0%	15.8%
Assignment as a Special Master Pursuant to Section 636(b)(2)	113	79	-	56.8%
Evidentiary Proceedings Conducted Pursuant to Section 636(b)(1)(B)	48	42	-12.5%	21.9%
Matters Disposed of Pursuant to Title 28 U.S.C. Section 636(a)				
Search Warrants	256	271	5.9%	12.1%
Summonses	66	48	-27.3%	34.5%
Arrest Warrants	871	676	-22.4%	27.5%
Bail Reviews	168	136	-19.0%	22.5%
Appearances & Preliminary Exams	866	652	-24.7%	14.8%
Matters Disposed of Pursuant to Title 28 U.S.C. Section 636(b)				
Criminal Cases				
Post Indictment Arraignments	299	277	-7.4%	11.0%
Pretrial Conferences	3206	2136	-33.4%	90.6%
Motions	113	79	-30.1%	56.8%
Grand Jury Sessions	107	78	-27.1%	7.1%
Civil Cases				
Prisoner Petitions	62	64	3.2%	10.6%
Pretrial Conferences	686	684	-0.3%	5.0%
Motions	59	79	33.9%	8.8%
Social Security	26	46	76.9%	25.7%
Defendants Disposed of				
Misdemeanor	64	57	-10.9%	37.7%
Petty Offense	130	37	-71.5%	4.1%

Table 28
MAGISTRATE JUDGE ACTIVITY IN THE DISTRICT OF VERMONT

Full Time Magistrate Judges 1

Part Time Magistrate Judges 0

	Years ending		Change	% 2007 Cir. Total
	9/30/06	9/30/07		
Civil Consent Trials Etc. Pursuant to Section 636(c)	38	25	-34.2%	3.0%
Assignment as a Special Master Pursuant to Section 636(b)(2)	0	3	-	2.2%
Evidentiary Proceedings Conducted Pursuant to Section 636(b)(1)(B)	0	3	-	1.6%
Matters Disposed of Pursuant to Title 28 U.S.C. Section 636(a)				
Search Warrants	35	52	48.6%	2.3%
Summonses	0	0	-	0.0%
Arrest Warrants	26	36	38.5%	1.5%
Bail Reviews	24	27	12.5%	4.5%
Appearances & Preliminary Exams	161	150	-6.8%	3.4%
Matters Disposed of Pursuant to Title 28 U.S.C. Section 636(b)				
Criminal Cases				
Post Indictment Arraignments	141	157	11.3%	6.2%
Pretrial Conferences	0	0	-	0.0%
Motions	0	3	#DIV/0!	2.2%
Grand Jury Sessions	92	109	18.5%	9.9%
Civil Cases				
Prisoner Petitions	35	45	28.6%	7.5%
Pretrial Conferences	6	3	-50.0%	0.0%
Motions	6	8	33.3%	0.9%
Social Security	7	7	0.0%	3.9%
Defendants Disposed of				
Misdemeanor	1	0	-100.0%	0.0%
Petty Offense	11	21	90.9%	2.3%

STATISTICS

BANKRUPTCY COURTS

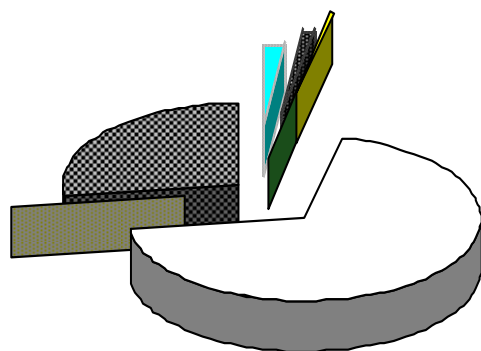
Table 29
SECOND CIRCUIT BANKRUPTCY COURTS
 Years Ending September 30th

Authorized Judgeships 24

	Petitions			Adversary Proceedings		
	2006	2007	Change	2006	2007	Change
Filed	68079	45244	-33.5%	5006	4256	-15.0%
Per Judgeship	2837	1885		209	177	
Terminated	99753	46546	-53.3%	6819	5167	-24.2%
Per Judgeship	4156	1939		284	215	
Pending	65898	64596	-2.0%	16778	15867	-5.4%
Per Judgeship	2746	2692		699	661	
Inventory Control Index (Months)	7.9	16.7	8.7	29.5	36.9	7.3

Second Circuit Bankruptcy Courts

Figure 21



- Bus. Ch. 7: 1.82%
- Bus. Ch. 11: 1.18%
- Bus. Ch. 12: 0.05%
- Bus. Ch. 13: 0.38%
- Non-Bus. Ch. 7: 69.26%
- Non-Bus. Ch. 11: 0.08%
- Non-Bus. Ch. 13: 27.23%

Second Circuit total filings: 45, 244

Table 30
ALL UNITED STATES BANKRUPTCY COURTS
 Years Ending September 30th

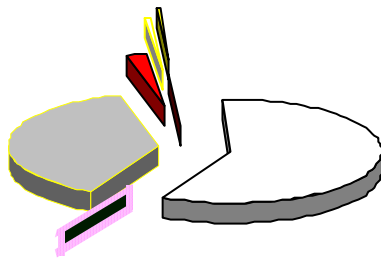
Authorized Judgeships..... 232

	Petitions			Adversary Proceedings		
	2006	2007	Change	2006	2007	Change
Filed	1112542	801269	-28.0%	65208	49476	-24.1%
Per Judgeship	4795	3454		281	213	
Terminated	1619142	864588	-46.6%	82324	59504	-27.7%
Per Judgeship	6979	3727		355	256	
Pending	1361335	1298016	-4.7%	72594	63066	-13.1%
Per Judgeship	5868	5595		313	272	
Inventory Control Index (Months)	10.1	18.0	7.9	10.6	12.7	2.1

United States Bankruptcy Courts

Figure 22

Year Ending September 30, 2007



- Bus. Ch. 7: 2.11%
- Bus. Ch. 11: 0.66%
- Bus. Ch. 12: 0.05%
- Bus. Ch. 13: 0.41%
- Non-Bus. Ch. 7: 58.32%
- Non-Bus. Ch. 11: 0.07%
- Non-Bus. Ch. 13: 38.38%

National total filings: 801, 269

Table 31
DISTRICT OF CONNECTICUT BANKRUPTCY COURT
 Years Ending September 30th

Authorized Judgeships. . . . 3

	Petitions			Adversary Proceedings		
	2006	2007	Change	2006	2007	Change
Filed	8895	5572	-37.4%	383	300	-21.7%
Per Judgeship	2965	1857		128	100	
Terminated	12184	5435	-55.4%	438	321	-26.7%
Per Judgeship	4061	1812		146	107	
Pending	5199	5336	2.6%	559	538	-3.8%
Per Judgeship	1733	1779		186	179	
Inventory Control Index (Months)	5.1	11.8	6.7	15.3	20.1	4.8

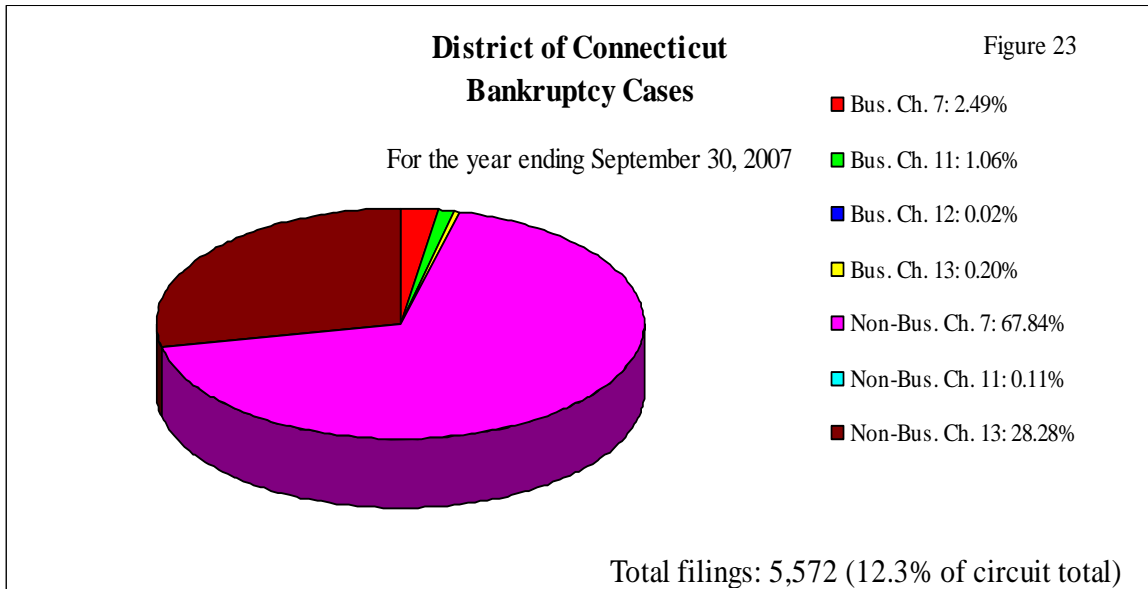


Table 32
NORTHERN DISTRICT OF NEW YORK BANKRUPTCY COURT
 Years Ending September 30th

Authorized Judgeships 2

	Petitions			Adversary Proceedings		
	2006	2007	Change	2006	2007	Change
Filed	13123	11262	-14.2%	627	422	-32.7%
Per Judgeship	6562	5631		314	211	
Terminated	17690	9943	-43.8%	748	664	-11.2%
Per Judgeship	8845	4972		374	332	
Pending	19172	20491	6.9%	5712	5470	-4.2%
Per Judgeship	9586	10246		2856	2735	
Inventory Control Index (Months)	13.0	24.7	11.7	91.6	98.9	7.2

**Northern District of New York
 Bankruptcy Cases**

For the Year Ending September 30, 2007

Figure 24

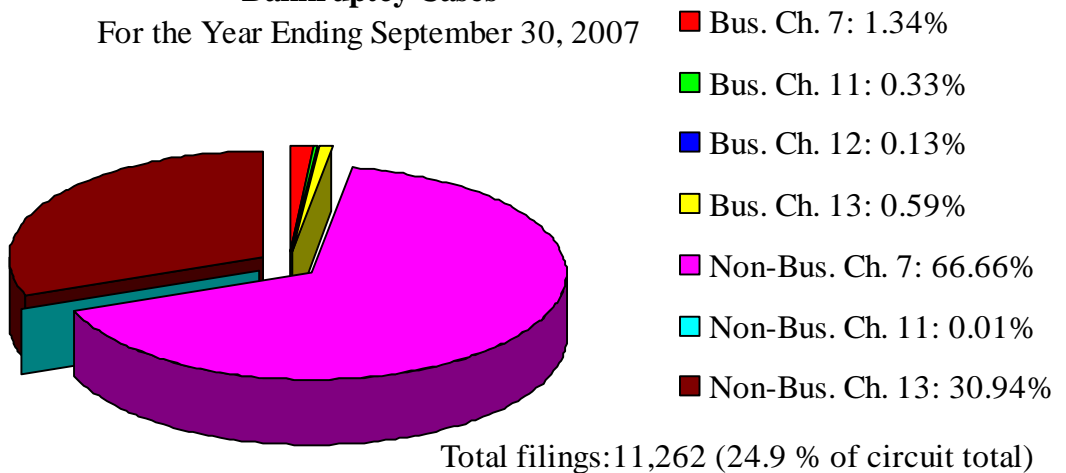


Table 33
EASTERN DISTRICT OF NEW YORK BANKRUPTCY COURT
 Years Ending September 30th

Authorized Judgeships. 6

	Petitions			Adversary Proceedings		
	2006	2007	Change	2006	2007	Change
Filed	18531	11800	-36.3%	1173	963	-17.9%
Per Judgeship	3089	1967		196	161	
Terminated	28247	11924	-57.8%	1331	1111	-16.5%
Per Judgeship	4708	1987		222	185	
Pending	9580	9456	-1.3%	1136	988	-13.0%
Per Judgeship	1597	1576		189	165	
Inventory Control Index (Months)	4.1	9.5	5.4	10.2	10.7	0.4

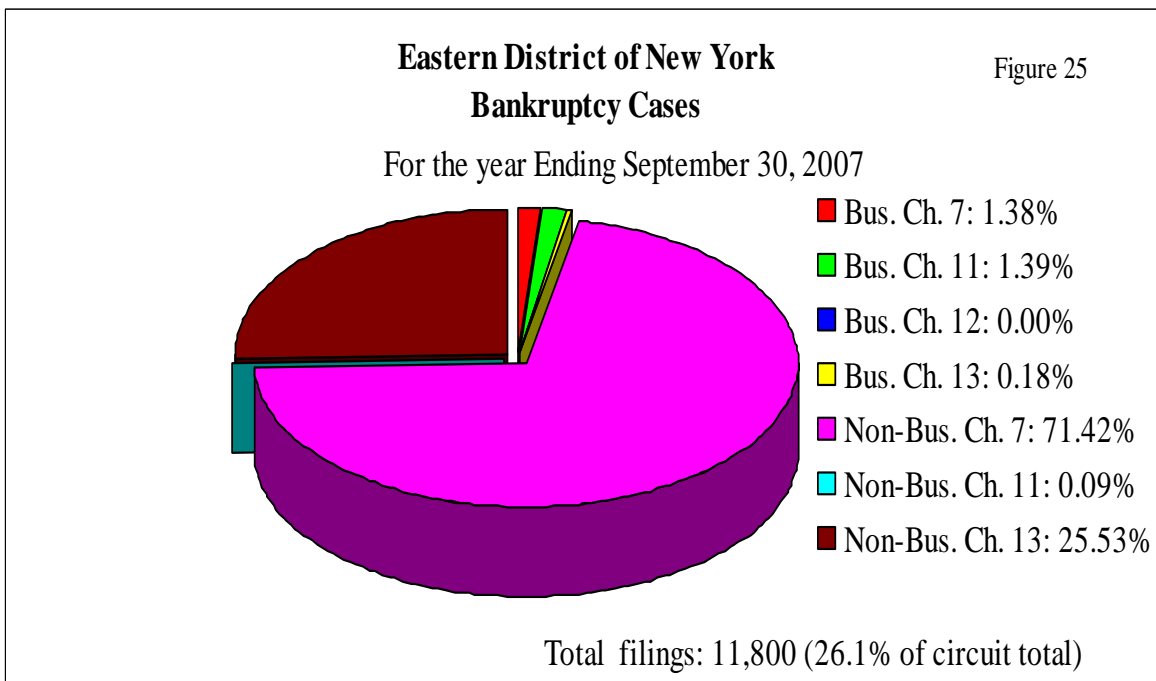


Table 34
SOUTHERN DISTRICT OF NEW YORK BANKRUPTCY COURT
 Years Ending September 30th

Authorized Judgeships. 9

	Petitions			Adversary Proceedings		
	2006	2007	Change	2006	2007	Change
Filed	13496	7251	-46.3%	2305	2224	-3.5%
Per Judgeship	1500	806		256	247	
Terminated	23961	8941	-62.7%	3671	2647	-27.9%
Per Judgeship	2662	993		408	294	
Pending	11990	10300	-14.1%	8834	8411	-4.8%
Per Judgeship	1332	1144		982	935	
Inventory Control Index (Months)	6.0	13.8	7.8	28.9	38.1	9.3

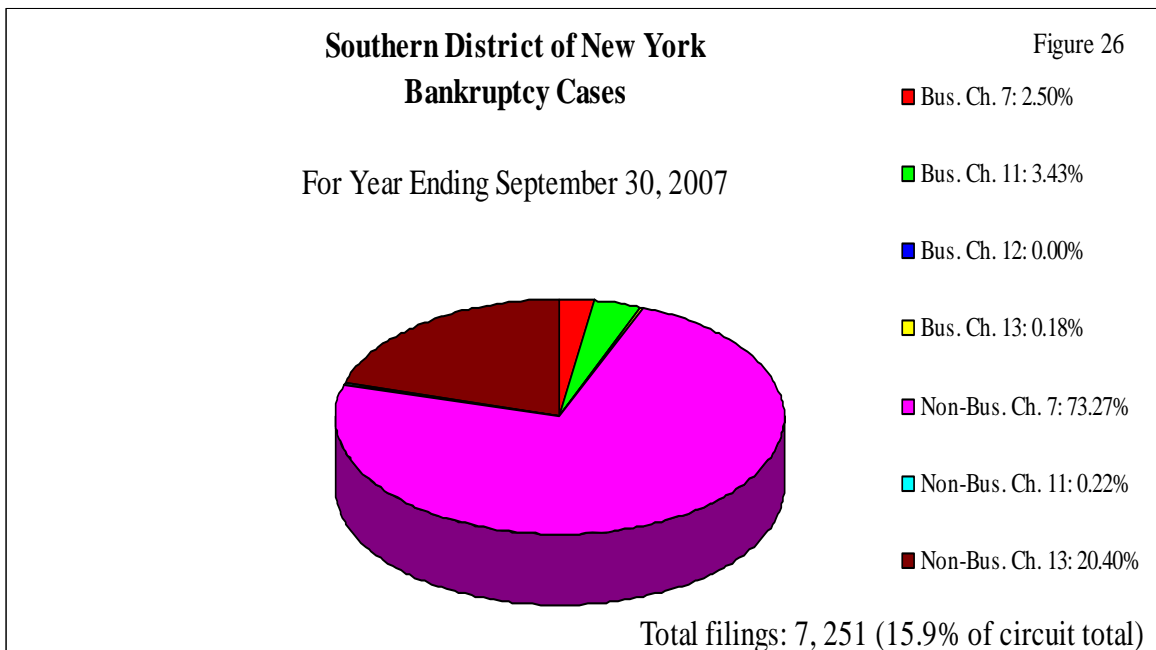


Table 35
WESTERN DISTRICT OF NEW YORK BANKRUPTCY COURT
 Years Ending September 30th

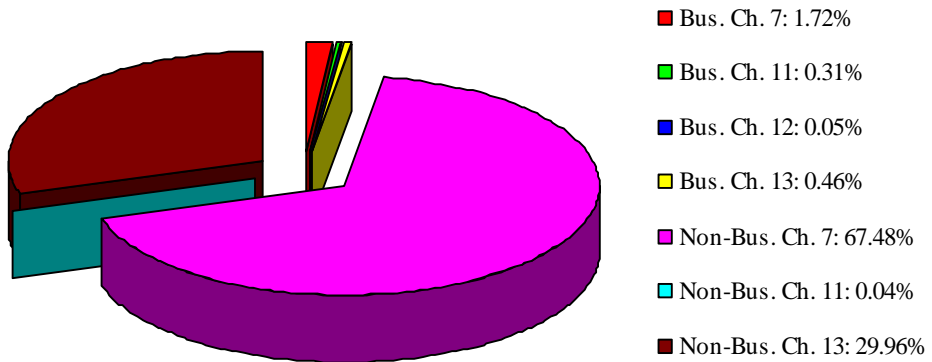
Authorized Judgeships 3

	Petitions			Adversary Proceedings		
	2006	2007	Change	2006	2007	Change
Filed	12536	8510	-32.1%	453	316	-30.2%
Per Judgeship	4179	2837		151	105	
Terminated	15746	9515	-39.6%	559	373	-33.3%
Per Judgeship	5249	3172		186	124	
Pending	18685	17680	-5.4%	483	426	-11.8%
Per Judgeship	6228	5893		161	142	
Inventory Control Index (Months)	14.2	22.3	8.1	10.4	13.7	3.3

**Western District of New York
 Bankruptcy Cases**

Figure 27

For the year Ending September 30, 2007



Total filings: 8510 (18.8% of circuit total)

Table 36
DISTRICT OF VERMONT BANKRUPTCY COURT
 Years Ending September 30th

Authorized Judgeships. 1

	Petitions			Adversary Proceedings		
	2006	2007	Change	2006	2007	Change
Filed	1498	849	-43.3%	65	31	-52.3%
Per Judgeship	1498	849		65	31	
Terminated	1925	788	-59.1%	72	51	-29.2%
Per Judgeship	1925	788		72	51	
Pending	1272	1333	4.8%	54	34	-37.0%
Per Judgeship	1272	1333		54	34	
Inventory Control Index (Months)	7.9	20.3	12.4	9.0	8.0	-1.0

